

INTERNATIONAL REAL ESTATE REVIEW

2023 Vol. 25 No. 4: pp. A1 – A14

Asymmetric Causal Relations Between COVID-19 Economic Supports and Real Estate Price Shocks

Mustafa Özer

Department of Economics, Anadolu University, Eskişehir, Turkey

E-mail: muozer@anadolu.edu.tr

Serap Kamişli

Department of Finance and Banking, Bilecik Seyh Edebali University

E-mail: serap.kamisli@bilecik.edu.tr

Muhammed Aslam Chelery Komath

Graduate School of Social Sciences (Business Administration/Finance Program), Anadolu University, Eskişehir, Turkey

E-mail: muhammedaslamck83@gmail.com

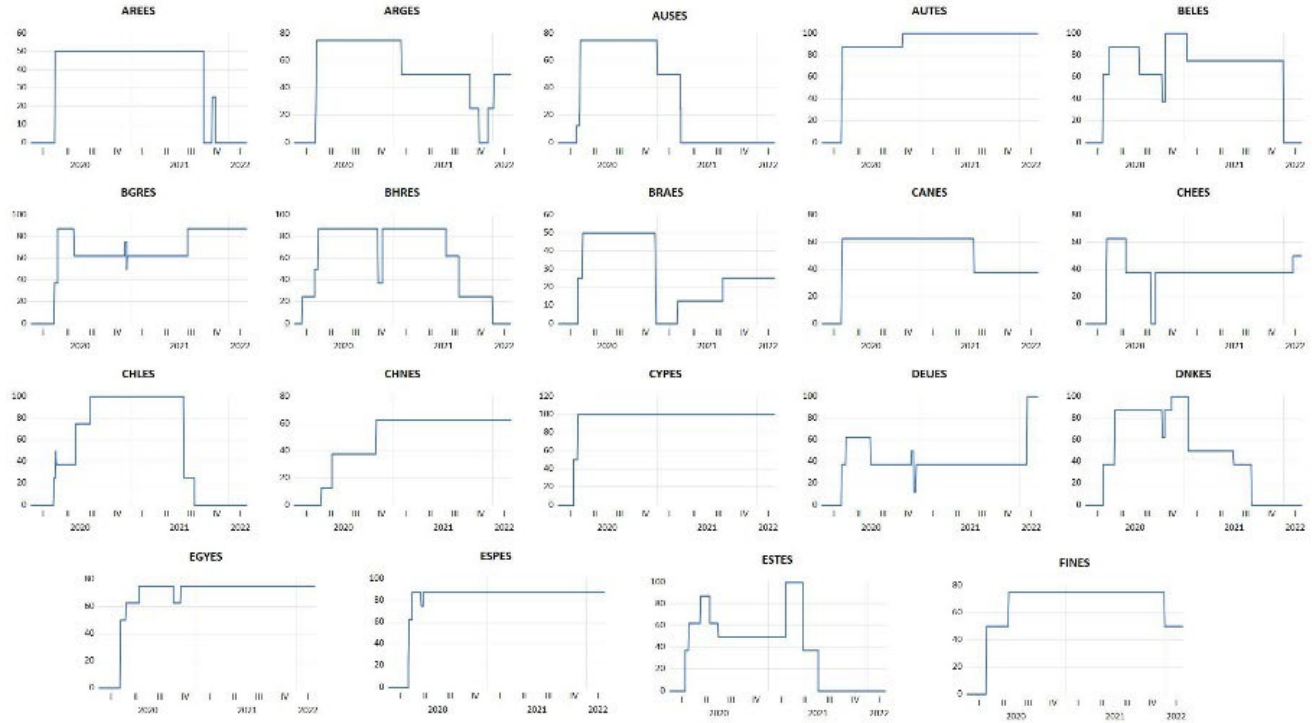
Özlem Sayilir

Faculty of Business Administration, Anadolu University, Eskişehir, Turkey

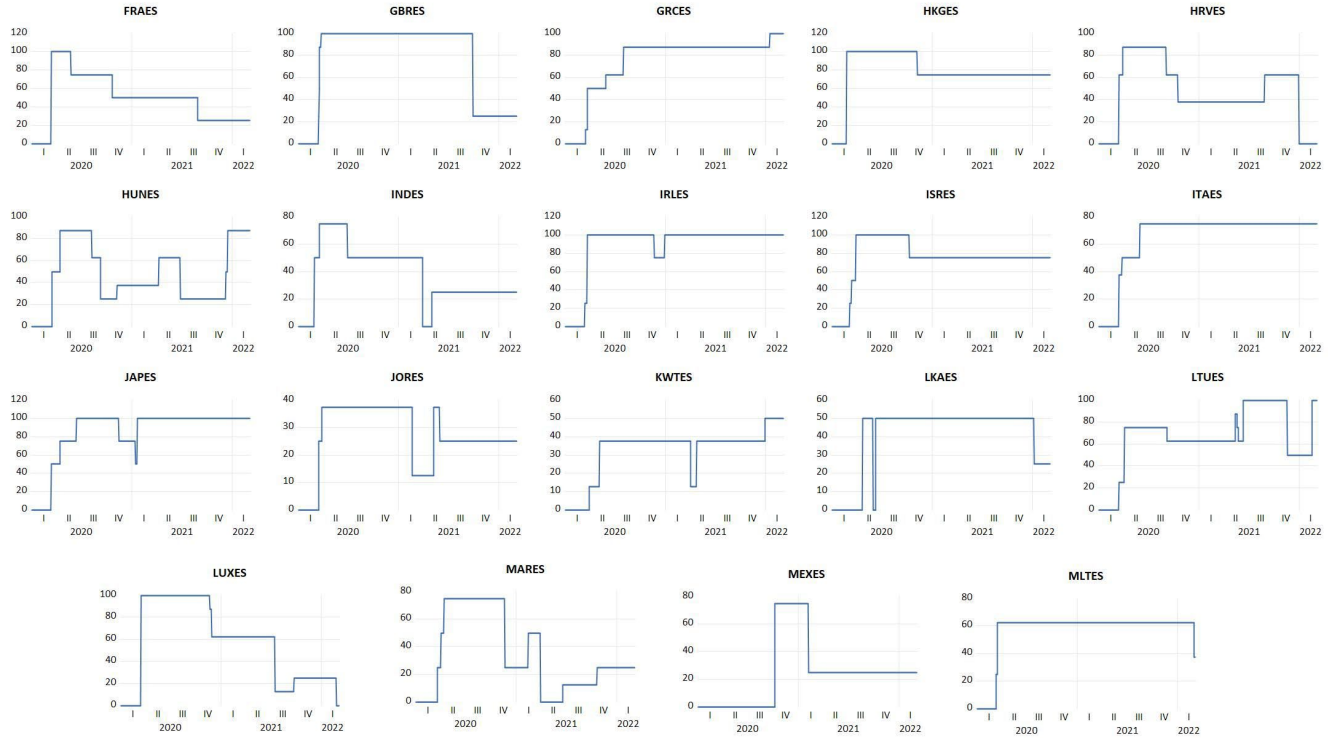
E-mail: osayilir@anadolu.edu.tr

Online Appendix

Figure 1 Economic supports across the sample countries



(Figure 1 Continued)



(Figure 1 Continued)

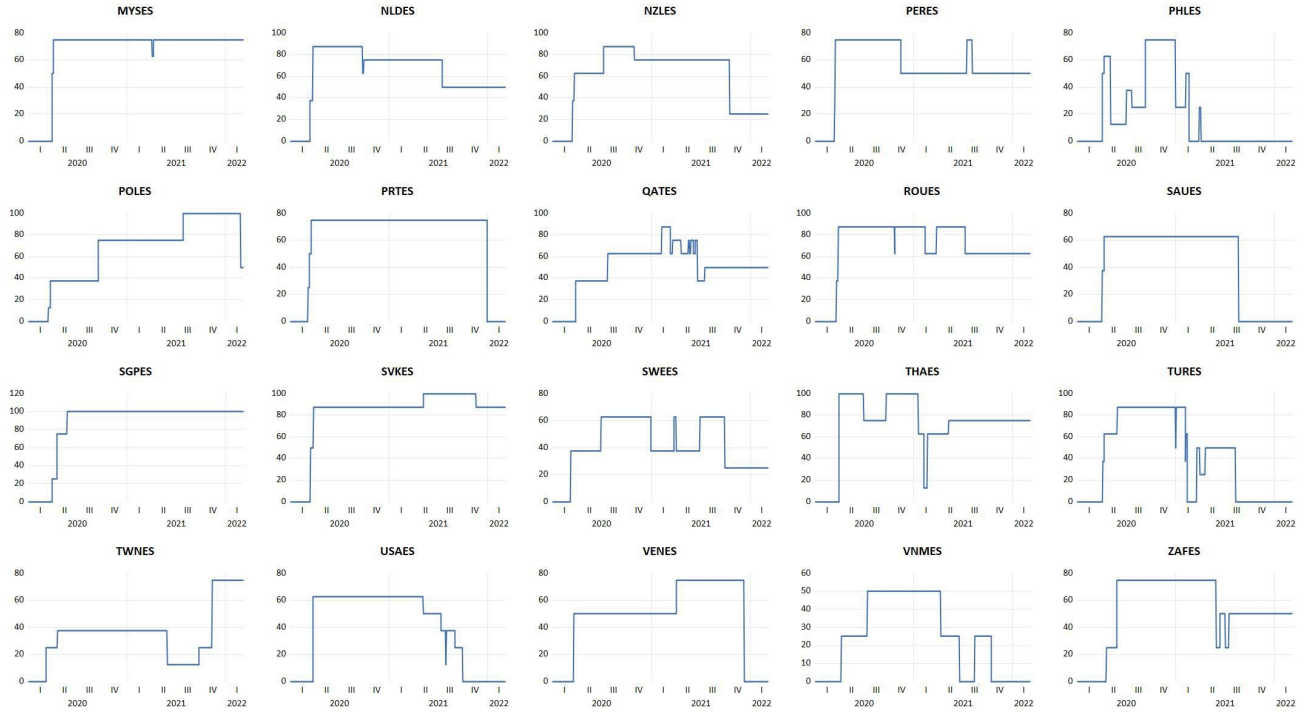


Table 1 FFFF-TY Results (Immediate Market Reaction, Days 0-2)

	W-statistics	Bootstrap prob.value	p	k		W-statistics	Bootstrap prob.value	p	k
AREES ≠> ARERE +	0.013	0.412	1	0.8	AREES ≠> ARERE -	0.008	0.508	1	0.8
ARGES ≠> ARGRE +	37.01	0.001	1	0.8	ARGES ≠> ARGRE -	35.37	<0.001	1	0.8
AUSES ≠> AUSRE +	3.604	0.083	1	0.8	AUSES ≠> AUSRE -	4.665	0.053	1	0.8
AUTES ≠> AUTRE +	4.240	0.037	1	0.8	AUTES ≠> AUTRE -	10.51	0.018	1	0.8
BELES ≠> BELRE +	0.014	0.464	1	0.8	BELES ≠> BELRE -	0.007	0.575	1	0.8
BGRES ≠> BGRRE +	0.182	0.214	1	0.8	BGRES ≠> BGRRE -	0.042	0.437	1	0.8
BHRES ≠> BHRRE +	0.007	0.684	1	0.8	BHRES ≠> BHRRE -	0.085	0.350	1	0.8
BRAES ≠> BRARE +	0.007	0.494	1	0.8	BRAES ≠> BRARE -	0.001	0.788	1	0.8
CANES ≠> CANRE +	46.23	0.005	1	0.8	CANES ≠> CANRE -	44.17	0.007	1	0.8
CHEES ≠> CHERE +	3.819	0.048	1	0.8	CHEES ≠> CHERE -	3.792	0.054	1	0.8
CHLES ≠> CHLRE +	0.462	0.164	1	0.8	CHLES ≠> CHLRE -	0.000	0.992	1	0.8
CHNES ≠> CHNRE +	0.001	0.866	1	0.8	CHNES ≠> CHNRE -	0.006	0.631	1	0.8
CYPES ≠> CYPRE +	4.591	0.322	5	0.1	CYPES ≠> CYPRE -	3.385	0.395	5	0.1
DEUES ≠> DEURE +	0.105	0.372	1	0.8	DEUES ≠> DEURE -	0.030	0.522	1	0.8
DNKES ≠> DNKRE +	<0.001	0.959	1	0.8	DNKES ≠> DNKRE -	0.011	0.559	1	0.8
EGYES ≠> EGYRE +	0.005	0.669	1	0.8	EGYES ≠> EGYRE -	0.027	0.416	1	0.8
ESPES ≠> ESPRE +	19.23	0.025	5	0.1	ESPES ≠> ESPRE -	31.81	<0.001	5	0.1
ESTES ≠> ESTRE +	7.297	0.230	5	0.1	ESTES ≠> ESTRE -	3.825	0.374	5	0.1
FINES ≠> FINRE +	0.006	0.426	1	0.8	FINES ≠> FINRE -	0.001	0.729	1	0.8
FRAES ≠> FRARE +	0.349	0.143	1	0.8	FRAES ≠> FRARE -	0.441	0.132	1	0.8
GBRES ≠> GBRRE +	1.761	0.043	1	0.8	GBRES ≠> GBRRE -	1.565	0.050	1	0.8
GRCES ≠> GRCRE +	0.056	0.371	1	0.8	GRCES ≠> GRCRE -	0.065	0.342	1	0.8
HKGES ≠> HKGRE +	0.001	0.769	1	0.8	HKGES ≠> HKGRE -	0.003	0.588	1	0.8
HRVES ≠> HRVRE +	<0.001	1.000	1	0.8	HRVES ≠> HRVRE -	<0.001	1.000	1	0.8

(Continued...)

(Table 1 Continued)

	W-statistics	Bootstrap prob.value	p	k		W-statistics	Bootstrap prob.value	p	k
HUNES ≠> HUNRE ⁺	0.011	0.602	1	0.8	HUNES ≠> HUNRE ⁻	0.003	0.781	1	0.8
INDES ≠> INDRE ⁺	<0.001	0.964	1	0.8	INDES ≠> INDRE ⁻	<0.001	0.872	1	0.8
IRLES ≠> IRLRE⁺	0.573	0.086	1	0.8	IRLES ≠> IRLRE⁻	0.024	0.335	1	0.8
ISRES ≠> ISRRE ⁺	0.008	0.474	1	0.8	ISRES ≠> ISRRE ⁻	0.008	0.503	1	0.8
ITAES ≠> ITARE ⁺	0.028	0.353	1	0.8	ITAES ≠> ITARE ⁻	0.001	0.785	1	0.8
JAPES ≠> JAPRE ⁺	0.021	0.439	1	0.8	JAPES ≠> JAPRE ⁻	0.058	0.323	1	0.8
JORES ≠> JORRE ⁺	5.228	0.319	5	0.1	JORES ≠> JORRE ⁻	3.283	0.597	5	0.1
KWTES ≠> KWTRE ⁺	0.003	0.721	1	0.8	KWTES ≠> KWTRE ⁻	0.008	0.612	1	0.8
LKAES ≠> LKARE ⁺	<0.001	0.981	1	0.8	LKAES ≠> LKARE ⁻	0.011	0.437	1	0.8
LTUES ≠> LTURE ⁺	0.232	0.243	1	0.8	LTUES ≠> LTURE ⁻	0.010	0.655	1	0.8
LUXES ≠> LUXRE ⁺	0.039	0.345	1	0.8	LUXES ≠> LUXRE ⁻	0.342	0.139	1	0.8
MARES ≠> MARRE ⁺	0.001	0.806	1	0.8	MARES ≠> MARRE ⁻	<0.001	0.949	1	0.8
MEXES ≠> MEXRE ⁺	0.008	0.526	1	0.8	MEXES ≠> MEXRE ⁻	0.018	0.401	1	0.8
MLTES ≠> MLTRE⁺	74.23	<0.001	5	0.1	MLTES ≠> MLTRE⁻	3.580	0.073	1	0.8
MYESE ≠> MYSRE⁺	3.684	0.048	1	0.8	MYESE ≠> MYSRE⁻	5.004	0.040	1	0.8
NLDES ≠> NLDRE ⁺	0.040	0.284	1	0.8	NLDES ≠> NLDRE ⁻	<0.001	0.849	1	0.8
NZLES ≠> NZLRE ⁺	5.820	0.292	5	0.8	NZLES ≠> NZLRE⁻	12.27	0.063	5	0.1
PERES ≠> PERRE⁺	51.53	0.002	1	0.8	PERES ≠> PERRE⁻	51.53	0.001	1	0.8
PHLES ≠> PHLRE ⁺	0.036	0.605	1	0.8	PHLES ≠> PHLRE ⁻	0.047	0.585	1	0.8
POLES ≠> POLRE ⁺	<0.001	0.946	1	0.8	POLES ≠> POLRE ⁻	0.056	0.282	1	0.8
PRTES ≠> PRTRE⁺	3.125	0.059	1	0.8	PRTES ≠> PRTRE⁻	2.059	0.083	1	0.8
QATES ≠> QATRE ⁺	0.000	0.964	1	0.8	QATES ≠> QATRE ⁻	<0.001	0.962	1	0.8
ROUES ≠> ROURE ⁺	0.042	0.400	1	0.1	ROUES ≠> ROURE ⁻	0.012	0.587	1	0.8
SAUES ≠> SAURE⁺	79.14	<0.001	5	0.8	SAUES ≠> SAURE⁻	54.45	0.014	5	0.1
SGPES ≠> SGPRE ⁺	0.076	0.181	1	0.8	SGPES ≠> SGPRE ⁻	0.181	0.141	1	0.8

(Continued...)

(Table 1 Continued)

	W-statistics	Bootstrap prob.value	p	k		W-statistics	Bootstrap prob.value	p	k
SVKES ≠> SVKRE +	0.003	0.593	1	0.8	SVKES ≠> SVKRE -	0.003	0.580	1	0.8
SWEES ≠> SWERE +	0.004	0.635	1	0.8	SWEES ≠> SWERE -	0.015	0.474	1	0.8
THAES ≠> THARE +	0.037	0.366	1	0.8	THAES ≠> THARE -	<0.001	0.987	1	0.8
TURES ≠> TURRE +	0.171	0.342	1	0.8	TURES ≠> TURRE -	0.033	0.551	1	0.8
TWNES ≠> TWNRE +	0.106	0.229	1	0.8	TWNES ≠> TWNRE -	0.143	0.194	1	0.8
USAES ≠> USARE +	0.001	0.884	1	0.8	USAES ≠> USARE -	0.008	0.629	1	0.8
VENES ≠> VENRE +	0.095	0.142	1	0.8	VENES ≠> VENRE -	<0.001	0.916	1	0.8
VNMES ≠> VNMRE +	0.079	0.315	1	0.8	VNMES ≠> VNMRE -	0.032	0.433	1	0.8
ZAFES ≠> ZAFRE +	0.030	0.378	1	0.8	ZAFES ≠> ZAFRE -	<0.001	0.872	1	0.8

Table 2 FFFF-TY Results (Short-term, Days 4-32)

	W-statistics	Bootstrap prob.value	p	k		W-statistics	Bootstrap prob.value	p	k
AREES ≠> ARERE +	1.160	0.207	1	0.8	AREES ≠> ARERE -	0.156	0.600	1	0.8
ARGES ≠> ARGRE +	1.532	0.204	1	0.8	ARGES ≠> ARGRE -	0.914	0.296	1	0.8
AUSES ≠> AUSRE +	29.07	<0.001	1	0.8	AUSES ≠> AUSRE -	23.53	<0.001	1	0.8
AUTES ≠> AUTRE +	57.24	<0.001	1	0.8	AUTES ≠> AUTRE -	300.2	<0.001	1	0.8
BELES ≠> BELRE +	0.876	0.286	1	0.8	BELES ≠> BELRE -	0.942	0.274	1	0.8
BGRES ≠> BGRRE +	1.993	0.125	1	0.8	BGRES ≠> BGRRE -	0.120	0.713	1	0.8
BHRES ≠> BHRRE +	0.456	0.438	1	0.8	BHRES ≠> BHRRE -	0.438	0.451	1	0.8
BRAES ≠> BRARE +	2.295	0.117	1	0.8	BRAES ≠> BRARE -	2.318	0.106	1	0.8
CANES ≠> CANRE +	0.600	0.391	1	0.8	CANES ≠> CANRE -	1.609	0.181	1	0.8
CHEES ≠> CHERE +	24.13	<0.001	1	0.8	CHEES ≠> CHERE -	28.25	<0.001	1	0.8

(Continued...)

(Table 2 Continued)

	W-statistics	Bootstrap prob.value	p	k		W-statistics	Bootstrap prob.value	p	k
CHLES ≠> CHLRE +	0.305	0.525	1	0.8	CHLES ≠> CHLRE -	0.330	0.502	1	0.8
CHNES ≠> CHNRE +	0.238	0.565	1	0.8	CHNES ≠> CHNRE -	0.004	0.951	1	0.8
CYPES ≠> CYPRE +	0.035	0.341	1	0.8	CYPES ≠> CYPRE -	0.015	0.495	1	0.8
DEUES ≠> DEURE +	1.851	0.133	1	0.8	DEUES ≠> DEURE -	3.328	0.070	1	0.8
DNKES ≠> DNKRE +	0.031	0.830	1	0.8	DNKES ≠> DNKRE -	0.059	0.785	1	0.8
EGYES ≠> EGYRE +	0.413	0.460	1	0.8	EGYES ≠> EGYRE -	0.742	0.349	1	0.8
ESPES ≠> ESPRE +	58.38	<0.001	1	0.8	ESPES ≠> ESPRE -	49.90	<0.001	1	0.8
ESTES ≠> ESTRE +	<0.001	0.983	1	0.8	ESTES ≠> ESTRE -	0.114	0.731	1	0.8
FINES ≠> FINRE +	0.002	0.963	1	0.8	FINES ≠> FINRE -	<0.001	0.979	1	0.8
FRAES ≠> FRARE +	0.332	0.505	1	0.8	FRAES ≠> FRARE -	1.588	0.166	1	0.8
GBRES ≠> GBRRE +	1.761	0.064	1	0.8	GBRES ≠> GBRRE -	8.625	0.016	1	0.8
GRCES ≠> GRCRE +	0.691	0.337	1	0.8	GRCES ≠> GRCRE -	2.131	0.122	1	0.8
HKGES ≠> HKGRE +	0.071	0.712	1	0.8	HKGES ≠> HKGRE -	0.000	0.974	1	0.8
HRVES ≠> HRVRE +	1.558	0.194	1	0.8	HRVES ≠> HRVRE -	2.531	0.125	1	0.8
HUNES ≠> HUNRE +	0.011	0.639	1	0.8	HUNES ≠> HUNRE -	0.086	0.733	1	0.8
INDES ≠> INDRE +	0.069	0.775	1	0.8	INDES ≠> INDRE -	0.001	0.970	1	0.8
IRLES ≠> IRLRE +	3.265	0.056	1	0.8	IRLES ≠> IRLRE -	4.313	0.043	1	0.8
ISRES ≠> ISRRE +	3.654	0.057	1	0.8	ISRES ≠> ISRRE -	3.029	0.069	1	0.8
ITAES ≠> ITARE +	<0.001	0.982	1	0.8	ITAES ≠> ITARE -	0.593	0.349	1	0.8
JAPES ≠> JAPRE +	0.021	0.460	1	0.8	JAPES ≠> JAPRE -	0.264	0.551	1	0.8
JORES ≠> JORRE +	0.047	0.797	1	0.8	JORES ≠> JORRE -	0.020	0.875	1	0.8
KWTES ≠> KWTRE +	0.147	0.656	1	0.8	KWTES ≠> KWTRE -	0.115	0.702	1	0.8
LKAES ≠> LKARE +	1.678	0.182	1	0.8	LKAES ≠> LKARE -	1.533	0.174	1	0.8
LTUES ≠> LTURE +	2.999	0.079	1	0.8	LTUES ≠> LTURE -	1.955	0.139	1	0.8
LUXES ≠> LUXRE +	0.109	0.675	1	0.8	LUXES ≠> LUXRE -	0.002	0.956	1	0.8

(Continued...)

(Table 2 Continued)

	W-statistics	Bootstrap prob.value	p	k		W-statistics	Bootstrap prob.value	p	k
MARES ≠> MARRE +	1.170	0.244	1	0.8	MARES ≠> MARRE -	1.231	0.221	1	0.8
MEXES ≠> MEXRE +	0.008	0.911	1	0.8	MEXES ≠> MEXRE -	0.022	0.839	1	0.8
MLTES ≠> MLTRE +	50.00	<0.001	1	0.8	MLTES ≠> MLTRE -	2.060	0.158	1	0.8
MYSES ≠> MYSRE +	36.37	<0.001	1	0.8	MYSES ≠> MYSRE -	39.75	0.001	1	0.8
NLDES ≠> NLDRE +	0.537	0.404	1	0.8	NLDES ≠> NLDRE -	0.481	0.418	1	0.8
NZLES ≠> NZLRE +	0.812	0.296	1	0.8	NZLES ≠> NZLRE -	1.536	0.193	1	0.8
PERES ≠> PERRE +	0.342	0.524	1	0.8	PERES ≠> PERRE -	0.133	0.691	1	0.8
PHLES ≠> PHLRE +	0.038	0.851	1	0.8	PHLES ≠> PHLRE -	0.116	0.749	1	0.8
POLES ≠> POLRE +	2.160	0.126	1	0.8	POLES ≠> POLRE -	2.911	0.074	1	0.8
PRTES ≠> PRTRE +	1.662	0.158	1	0.8	PRTES ≠> PRTRE -	1.914	0.146	1	0.8
QATES ≠> QATRE +	0.011	0.919	1	0.8	QATES ≠> QATRE -	0.041	0.810	1	0.8
ROUES ≠> ROURE +	1.582	0.174	1	0.8	ROUES ≠> ROURE -	3.570	0.069	1	0.8
SAUES ≠> SAURE +	2.553	0.076	1	0.8	SAUES ≠> SAURE -	2.211	0.114	1	0.8
SGPES ≠> SGPRE +	3.508	0.054	1	0.8	SGPES ≠> SGPRE -	4.237	0.067	1	0.8
SVKES ≠> SVKRE +	0.065	0.766	1	0.8	SVKES ≠> SVKRE -	0.044	0.796	1	0.8
SWEES ≠> SWERE +	0.001	0.964	1	0.8	SWEES ≠> SWERE -	0.008	0.931	1	0.8
THAES ≠> THARE +	<0.001	0.996	1	0.8	THAES ≠> THARE -	0.017	0.899	1	0.8
TURES ≠> TURRE +	0.494	0.450	1	0.8	TURES ≠> TURRE -	0.059	0.786	1	0.8
TWNES ≠> TWNRE +	0.002	0.954	1	0.8	TWNES ≠> TWNRE -	0.017	0.856	1	0.8
USAES ≠> USARE +	0.951	0.318	1	0.8	USAES ≠> USARE -	1.980	0.146	1	0.8
VENES ≠> VENRE +	0.009	0.883	1	0.8	VENES ≠> VENRE -	0.019	0.853	1	0.8
VNMES ≠> VNMRE +	0.189	0.650	1	0.8	VNMES ≠> VNMRE -	0.030	0.868	1	0.8
ZAFES ≠> ZAFRE +	0.029	0.850	1	0.8	ZAFES ≠> ZAFRE -	0.029	0.854	1	0.8

Table 3 FFFF-TY Results (Medium-term, Days 64-128)

	W-statistics	Bootstrap prob.value	p	k		W-statistics	Bootstrap prob.value	p	k
AREES ≠> ARERE ⁺	144.9	<0.001	5	4.1	AREES ≠> ARERE ⁻	139.1	<0.001	5	3.7
ARGES ≠> ARGRE ⁺	116.7	<0.001	5	2.1	ARGES ≠> ARGRE ⁻	113.5	<0.001	5	2.1
AUSES ≠> AUSRE ⁺	109.8	<0.001	5	1.2	AUSES ≠> AUSRE ⁻	114.1	<0.001	5	3.4
AUTES ≠> AUTRE ⁺	125.6	<0.001	5	2.0	AUTES ≠> AUTRE ⁻	94.10	<0.001	5	2.0
BELES ≠> BELRE ⁺	4.421	0.475	5	4.1	BELES ≠> BELRE ⁻	3.915	0.535	5	4.1
BGRES ≠> BGRRE ⁺	51.95	<0.001	5	2.6	BGRES ≠> BGRRE ⁻	49.56	<0.001	5	2.6
BHRES ≠> BHRRE ⁺	21.48	0.004	5	2.0	BHRES ≠> BHRRE ⁻	13.08	0.033	5	2.0
BRAES ≠> BRARE ⁺	1.227	0.929	5	2.1	BRAES ≠> BRARE ⁻	1.413	0.899	5	2.1
CANES ≠> CANRE ⁺	60.21	<0.001	5	2.7	CANES ≠> CANRE ⁻	50.86	<0.001	5	2.7
CHEES ≠> CHERE ⁺	11.98	0.053	5	2.1	CHEES ≠> CHERE ⁻	10.55	0.089	5	2.1
CHLES ≠> CHLRE ⁺	35.40	<0.001	5	0.1	CHLES ≠> CHLRE ⁻	34.10	<0.001	5	0.1
CHNES ≠> CHNRE ⁺	90.40	<0.001	5	2.0	CHNES ≠> CHNRE ⁻	81.03	<0.001	5	2.0
CYPES ≠> CYPRE ⁺	127.6	<0.001	5	4.9	CYPES ≠> CYPRE ⁻	142.7	<0.001	5	4.7
DEUES ≠> DEURE ⁺	13.30	0.022	5	2.1	DEUES ≠> DEURE ⁻	15.21	0.018	5	2.1
DNKES ≠> DNKRE ⁺	78.31	<0.001	5	1.9	DNKES ≠> DNKRE ⁻	90.29	<0.001	5	1.9
EGYES ≠> EGYRE ⁺	5.255	0.378	5	2.0	EGYES ≠> EGYRE ⁻	5.085	0.400	5	4.1
ESPEs ≠> ESPRE ⁺	121.9	<0.001	5	2.0	ESPEs ≠> ESPRE ⁻	137.8	<0.001	5	2.0
ESTES ≠> ESTRE ⁺	55.33	<0.001	5	3.3	ESTES ≠> ESTRE ⁻	40.37	<0.001	5	3.3
FINES ≠> FINRE ⁺	31.94	<0.001	5	4.5	FINES ≠> FINRE ⁻	28.95	0.001	5	4.6
FRAES ≠> FRARE ⁺	0.918	0.902	4	2.2	FRAES ≠> FRARE ⁻	1.832	0.859	5	2.2
GBRES ≠> GBRRE ⁺	19.24	0.015	5	2.6	GBRES ≠> GBRRE ⁻	20.10	0.013	5	2.6
GRCES ≠> GRCRE ⁺	130.5	0.000	5	4.4	GRCES ≠> GRCRE ⁻	133.9	<0.001	5	2.0
HKGES ≠> HKGRE ⁺	3.179	0.472	4	2.2	HKGES ≠> HKGRE ⁻	2.543	0.565	4	2.2
HRVES ≠> HRVRE ⁺	0.000	1.000	1	0.8	HRVES ≠> HRVRE ⁻	26.38	0.001	5	2.1

(Continued...)

(Table 3 Continued)

	W-statistics	Bootstrap prob.value	p	k		W-statistics	Bootstrap prob.value	p	k
HUNES ≠> HUNRE ⁺	7.757	0.101	4	1.9	HUNES ≠> HUNRE ⁻	8.142	0.082	4	1.9
INDES ≠> INDRE ⁺	8.377	0.154	5	3.0	INDES ≠> INDRE ⁻	9.820	0.109	5	3.0
IRLES ≠> IRLRE ⁺	69.50	<0.001	5	2.9	IRLES ≠> IRLRE ⁻	64.17	<0.001	5	2.9
ISRES ≠> ISRRE ⁺	37.87	<0.001	5	2.1	ISRES ≠> ISRRE ⁻	38.09	<0.001	5	2.1
ITAES ≠> ITARE ⁺	46.12	<0.001	5	2.1	ITAES ≠> ITARE ⁻	50.22	<0.001	5	2.1
JAPES ≠> JAPRE ⁺	34.79	<0.001	4	2.1	JAPES ≠> JAPRE ⁻	29.99	<0.001	4	2.0
JORES ≠> JORRE ⁺	2.707	0.687	5	2.7	JORES ≠> JORRE ⁻	2.746	0.718	5	2.7
KWTES ≠> KWTRE ⁺	17.28	0.011	5	4.2	KWTES ≠> KWTRE ⁻	18.01	0.004	5	4.2
LKAES ≠> LKARE ⁺	212.8	<0.001	5	2.1	LKAES ≠> LKARE ⁻	226.5	<0.001	5	2.1
LTUES ≠> LTURE ⁺	31.60	<0.001	5	1.9	LTUES ≠> LTURE ⁻	22.45	0.006	5	1.9
LUXES ≠> LUXRE ⁺	2.248	0.650	4	2.8	LUXES ≠> LUXRE ⁻	2.485	0.729	5	2.9
MARES ≠> MARRE ⁺	2.316	0.632	4	3.8	MARES ≠> MARRE ⁻	0.345	0.991	4	2.2
MEXES ≠> MEXRE ⁺	7.643	0.126	4	2.2	MEXES ≠> MEXRE ⁻	9.956	0.067	4	2.3
MLTES ≠> MLTRE ⁺	56.63	<0.001	5	4.4	MLTES ≠> MLTRE ⁻	0.334	0.872	4	0.1
MYSES ≠> MYSRE ⁺	75.94	<0.001	5	2.6	MYSES ≠> MYSRE ⁻	64.07	<0.001	5	2.7
NLDES ≠> NLDRE ⁺	59.81	<0.001	5	2.0	NLDES ≠> NLDRE ⁻	61.94	<0.001	5	2.7
NZLES ≠> NZLRE ⁺	38.69	<0.001	5	2.0	NZLES ≠> NZLRE ⁻	41.01	<0.001	5	2.0
PERES ≠> PERRE ⁺	55.58	<0.001	5	2.5	PERES ≠> PERRE ⁻	98.51	<0.001	5	2.2
PHLES ≠> PHLRE ⁺	39.34	<0.001	5	1.6	PHLES ≠> PHLRE ⁻	28.24	<0.001	5	1.6
POLES ≠> POLRE ⁺	67.73	<0.001	5	2.0	POLES ≠> POLRE ⁻	64.20	<0.001	5	2.0
PRTES ≠> PRTRE ⁺	92.16	<0.001	5	2.2	PRTES ≠> PRTRE ⁻	72.83	<0.001	5	4.9
QATES ≠> QATRE ⁺	3.099	0.519	4	3.2	QATES ≠> QATRE ⁻	0.937	0.911	4	3.3
ROUES ≠> ROURE ⁺	58.00	<0.001	5	2.8	ROUES ≠> ROURE ⁻	74.10	<0.001	5	2.9
SAUES ≠> SAURE ⁺	80.66	<0.001	5	2.4	SAUES ≠> SAURE ⁻	81.49	<0.001	5	2.4
SGPES ≠> SGPRE ⁺	3.440	0.448	4	4.9	SGPES ≠> SGPRE ⁻	1.676	0.778	4	2.0

(Continued...)

(Table 3 Continued)

	W-statistics	Bootstrap prob.value	p	k		W-statistics	Bootstrap prob.value	p	k
SVKES ≠> SVKRE +	1.779	0.756	4	2.0	SVKES ≠> SVKRE -	4.260	0.377	4	2.0
SWEES ≠> SWERE +	6.029	0.211	4	2.4	SWEES ≠> SWERE -	6.644	0.143	4	2.4
THAES ≠> THARE +	8.871	0.125	5	3.2	THAES ≠> THARE -	7.575	0.195	5	3.2
TURES ≠> TURRE +	1.593	0.786	4	2.0	TURES ≠> TURRE -	1.593	0.806	4	2.0
TWNES ≠> TWNRE +	21.89	0.014	5	2.0	TWNES ≠> TWNRE -	4.216	0.005	5	2.0
USAES ≠> USARE +	43.61	<0.001	4	2.1	USAES ≠> USARE -	50.00	<0.001	4	2.1
VENES ≠> VENRE +	3.671	0.067	1	0.8	VENES ≠> VENRE -	6.676	0.008	1	0.8
VNMES ≠> VNMRE +	12.29	0.016	4	2.1	VNMES ≠> VNMRE -	12.16	0.026	4	2.1
ZAFES ≠> ZAFRE +	26.37	0.003	4	3.4	ZAFES ≠> ZAFRE -	56.61	<0.001	5	2.0

Table 4 FFFF-TY Results (Long-term' Days 256-512)

	W-statistics	Bootstrap prob.value	p	k		W-statistics	Bootstrap prob.value	p	k
AREES ≠> ARERE +	90.91	<0.001	5	0.9	AREES ≠> ARERE -	0.364	<0.001	5	0.9
ARGES ≠> ARGRE +	141.9	<0.001	5	3.0	ARGES ≠> ARGRE -	121.2	<0.001	5	2.9
AUSES ≠> AUSRE +	186.7	<0.001	5	4.8	AUSES ≠> AUSRE -	175.0	<0.001	5	2.9
AUTES ≠> AUTRE +	142.9	<0.001	5	2.0	AUTES ≠> AUTRE -	111.8	<0.001	5	3.0
BELES ≠> BELRE +	25.52	<0.001	5	0.9	BELES ≠> BELRE -	21.73	0.002	5	0.9
BGRES ≠> BGRRE +	66.51	<0.001	5	2.0	BGRES ≠> BGRRE -	54.62	<0.001	5	2.0
BHRES ≠> BHRRE +	13.95	0.010	4	0.9	BHRES ≠> BHRRE -	13.31	0.005	4	0.9
BRAES ≠> BRARE +	18.60	0.002	5	0.9	BRAES ≠> BRARE -	21.29	0.001	5	0.9
CANES ≠> CANRE +	96.61	<0.001	5	2.0	CANES ≠> CANRE -	91.78	<0.001	5	2.0
CHEES ≠> CHERE +	82.52	<0.001	5	0.9	CHEES ≠> CHERE -	87.48	<0.001	5	0.9

(Continued...)

(Table 4 Continued)

	W-statistics	Bootstrap prob.value	p	k		W-statistics	Bootstrap prob.value	p	k
CHLES ≠> CHLRE +	6.596	0.241	5	2.0	CHLES ≠> CHLRE -	9.076	0.123	5	2.0
CHNES ≠> CHNRE +	6.438	0.180	4	1.9	CHNES ≠> CHNRE -	7.822	0.110	4	1.9
CYPES ≠> CYPRE +	122.8	<0.001	5	0.9	CYPES ≠> CYPRE -	158.4	<0.001	5	2.1
DEUES ≠> DEURE +	32.27	<0.001	5	0.9	DEUES ≠> DEURE -	53.53	<0.001	5	0.7
DNKES ≠> DNKRE +	87.29	<0.001	5	2.0	DNKES ≠> DNKRE -	92.78	<0.001	5	2.0
EGYES ≠> EGYRE +	29.02	<0.001	4	1.9	EGYES ≠> EGYRE -	17.37	0.002	4	0.7
ESPES ≠> ESPRE +	99.30	<0.001	5	3.1	ESPES ≠> ESPRE -	97.76	<0.001	5	1.9
ESTES ≠> ESTRE +	18.87	0.004	5	0.9	ESTES ≠> ESTRE -	21.53	0.002	5	0.9
FINES ≠> FINRE +	31.16	<0.001	5	0.9	FINES ≠> FINRE -	28.32	0.001	5	0.9
FRAES ≠> FRARE +	36.81	<0.001	5	2.0	FRAES ≠> FRARE -	52.31	<0.001	5	2.1
GBRES ≠> GBRRE +	22.50	0.002	5	2.0	GBRES ≠> GBRRE -	24.09	<0.001	5	2.0
GRCES ≠> GRCRE +	85.52	<0.001	5	2.0	GRCES ≠> GRCRE -	103.1	<0.001	5	2.0
HKGES ≠> HKGRE +	5.855	0.224	4	0.9	HKGES ≠> HKGRE -	6.887	0.143	4	0.9
HRVES ≠> HRVRE +	232.8	<0.001	5	2.0	HRVES ≠> HRVRE -	71.23	<0.001	4	2.0
HUNES ≠> HUNRE +	120.7	<0.001	5	2.9	HUNES ≠> HUNRE -	150.5	<0.001	5	2.9
INDES ≠> INDRE +	38.21	<0.001	5	2.0	INDES ≠> INDRE -	36.16	<0.001	5	2.0
IRLES ≠> IRLRE +	50.59	<0.001	5	0.9	IRLES ≠> IRLRE -	52.81	<0.001	5	0.9
ISRES ≠> ISRRE +	20.00	0.003	5	0.9	ISRES ≠> ISRRE -	20.89	0.001	5	0.9
ITAES ≠> ITARE +	11.01	0.058	5	0.9	ITAES ≠> ITARE -	13.78	0.028	5	0.9
JAPES ≠> JAPRE +	14.17	0.009	4	0.9	JAPES ≠> JAPRE -	9.340	0.065	4	0.9
JORES ≠> JORRE +	99.27	<0.001	5	2.0	JORES ≠> JORRE -	70.52	<0.001	5	1.9
KWTES ≠> KWTRE +	37.94	<0.001	5	2.0	KWTES ≠> KWTRE -	42.25	<0.001	5	0.9
LKAES ≠> LKARE +	111.4	<0.001	5	0.9	LKAES ≠> LKARE -	112.0	<0.001	5	0.9
LTUES ≠> LTURE +	61.31	<0.001	5	0.9	LTUES ≠> LTURE -	57.78	<0.001	5	0.9
LUXES ≠> LUXRE +	28.55	<0.001	4	2.2	LUXES ≠> LUXRE -	23.58	0.001	4	0.7

(Continued...)

(Table 4 Continued)

	W-statistics	Bootstrap prob.value	p	k		W-statistics	Bootstrap prob.value	p	k
MARES ≠> MARRE ⁺	80.58	<0.001	5	0.9	MARES ≠> MARRE ⁻	74.56	<0.001	5	0.9
MEXES ≠> MEXRE ⁺	90.99	<0.001	5	2.0	MEXES ≠> MEXRE ⁻	87.51	<0.001	5	2.0
MLTES ≠> MLTRE ⁺	720.3	<0.001	5	0.9	MLTES ≠> MLTRE ⁻	3.291	0.386	4	1.9
MYSES ≠> MYSRE ⁺	78.50	<0.001	5	2.0	MYSES ≠> MYSRE ⁻	52.55	<0.001	5	2.0
NLDES ≠> NLDRE ⁺	18.41	0.006	5	2.0	NLDES ≠> NLDRE ⁻	22.70	0.001	5	2.0
NZLES ≠> NZLRE ⁺	37.83	<0.001	5	2.0	NZLES ≠> NZLRE ⁻	38.98	<0.001	5	2.0
PERES ≠> PERRE ⁺	23.15	<0.001	5	2.0	PERES ≠> PERRE ⁻	23.15	0.001	5	2.0
PHLES ≠> PHLRE ⁺	47.56	<0.001	5	2.9	PHLES ≠> PHLRE ⁻	51.21	<0.001	5	2.9
POLES ≠> POLRE ⁺	147.3	<0.001	5	2.0	POLES ≠> POLRE ⁻	148.7	<0.001	5	2.0
PRTES ≠> PRTRE ⁺	45.90	<0.001	5	0.9	PRTES ≠> PRTRE ⁻	69.49	<0.001	5	1.9
QATES ≠> QATRE ⁺	60.13	<0.001	5	2.0	QATES ≠> QATRE ⁻	54.90	<0.001	5	2.0
ROUES ≠> ROURE ⁺	41.99	<0.001	5	0.7	ROUES ≠> ROURE ⁻	53.33	<0.001	5	0.7
SAUES ≠> SAURE ⁺	76.88	<0.001	4	2.0	SAUES ≠> SAURE ⁻	132.7	<0.001	5	2.0
SGPES ≠> SGPRE ⁺	6.809	0.163	4	1.0	SGPES ≠> SGPRE ⁻	27.90	<0.001	4	1.9
SVKES ≠> SVKRE ⁺	50.38	<0.001	5	0.9	SVKES ≠> SVKRE ⁻	44.46	<0.001	5	0.9
SWEES ≠> SWERE ⁺	3.865	0.445	4	2.0	SWEES ≠> SWERE ⁻	2.986	0.577	4	2.0
THAES ≠> THARE ⁺	16.40	0.002	4	1.9	THAES ≠> THARE ⁻	23.37	<0.001	4	1.9
TURES ≠> TURRE ⁺	65.80	<0.001	5	2.0	TURES ≠> TURRE ⁻	84.00	<0.001	5	2.0
TWNES ≠> TWNRE ⁺	30.17	<0.001	4	0.9	TWNES ≠> TWNRE ⁻	28.21	<0.001	4	0.9
USAES ≠> USARE ⁺	34.75	<0.001	5	2.0	USAES ≠> USARE ⁻	26.84	<0.001	4	2.0
VENES ≠> VENRE ⁺	8.303	0.003	1	0.8	VENES ≠> VENRE ⁻	16.88	<0.001	1	0.8
VNMES ≠> VNMRE ⁺	7.080	0.118	4	2.0	VNMES ≠> VNMRE ⁻	5.672	0.262	4	2.0
ZAFES ≠> ZAFRE ⁺	7.883	<0.001	5	2.0	ZAFES ≠> ZAFRE ⁻	50.51	<0.001	5	2.0